

CES-S400 3D LiDAR Biometric Identity Recognition System

The most accurate 3D biometric quality facial recognition solution available in the world

The CES-S400 is the world's longest-range commercial biometric system, capturing 2D and 3D facial data to identify targets at standoff distances. With a tactical range up to 30 meters, the S400 can capture subjects in motion, handle extreme lighting variations, overcome occlusions such as sunglasses and beards, and correct off-angle poses for enhanced identification capabilities.

With the ability to capture 2D and 3D facial data in real time, the S400 supports group processing which increases throughput in high traffic environments. The system is easily deployed in a variety of real world situations, including fixed indoor and outdoor units as well as mobile vehicle-based systems.



3D Identification



Long range biometric imaging



Facial analytics

CES-S400

COMMERICAL ENTRY SYSTEM
FEATURING BEST IN CLASS
3D LIDAR FACIAL RECOGNITION



30 Meter scanning range of 3D LiDAR provides the distance and time you need to identify, evaluate, and react appropriately and safely

DEPLOYMENT FLEXIBILITY

- Longest range biometric system in the world
- Biometric enrollment at 30 meters
- Cooperative and non-cooperative subjects
- High throughput rate
- Operates in bright, dim and dark conditions
- Ceiling, wall, tripod, vehicle and covert mounting options
- Programmable alert notifications

PRODUCT BENEFITS

- Easily integrates with existing 2D databases
- Automatic and manual acquisition
- Automated watch-list matches and alerts
- Reduced false alarms with highly accurate 2D/3D matching
- Contactless sensor, hygienic and practical to maintain
- Imaging through glass for stationary or mobile surveillance
- Supports high traffic for group processing & increased throughput
- 100% eye-safe, invisible operation

SPECIFICATIONS

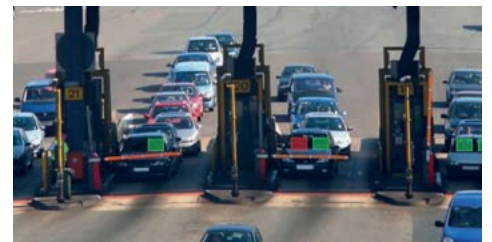
| | |
|---|---|
| 2D Camera Resolution | 1920 x 1080, per camera |
| Operating Range | 15 – 30m (49.21' – 98.43') |
| Field of View | Up to 1.85m x 1.04m (6.05' x 3.41') at 15m (49.21') distance, per camera Up to 3.16m x 1.78m (10.36' x 5.83') at 30m (98.43') distance, per camera |
| Throughput | (3D) up to 60 faces per minute, per sensor (2D) up to 360 faces per minute, per sensor |
| Power | 110 – 220VAC, 50/60Hz |
| Storage Temperature | -10°C – 60°C (14°F – 140°F) |
| Operating Temperature | Indoor 10°C – 40°C (50°F – 104°F) Outdoor 0°C – 50°C (32°F – 122°F) |
| Match Speed (Template Comparisons) | STAND-ALONE (3D) Up to 100,000 comparisons per second, per core (2D) Up to 250,000 comparisons per second, per core |
| Scanner Size (Typical Indoor Configuration) | Height: 36 cm (14") Width: 30 cm (11.5") Depth: 30 cm (11.5") |



Covert Mobile Vehicle
Completely invisible operation from inside SUV



Covert Outdoor Surveillance
Discreet monitoring capability



Vehicle Scan
Scan occupants through windshields